

# Genei Pre-stained Protein Molecular Weight Marker

## Application:

- ❖ Monitoring protein transfer onto membranes after Western blotting.
- ❖ Monitoring protein migration during SDS PAGE.
- ❖ Sizing of proteins on SDS PAGE and Western blots.

**Storage:** -20°C.

## Directions to Use:

- ❖ Allow the Pre-stained Molecular Weight marker vial to reach room temperature
- Mix the contents of the vial thoroughly before pipetting.
- Loading volume of Pre-stained protein molecular weight marker is 5-10ul
- Store the vial at -20°C immediately

## Introduction:

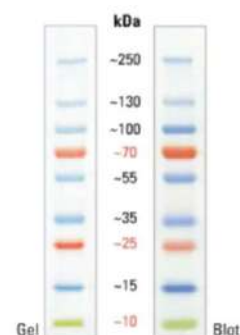
Genei Pre-stained Protein Marker is a mixture of purified and pre-stained proteins whose molecular weights are well calibrated. It is available in a ready to use format (boiling not required) and is suitable for sizing proteins in SDS PAGE. A coloured chromophore is covalently bound to all the proteins, which are visible during electrophoresis or electrophoretic transfer from the gel to a membrane as blue bands. A green, pink, and orange reference band, respectively, enable easier identification.

**Genei has different range of Protein marker to meet customer requirement.**

### 1. Pre-Stained Protein Marker, 10-250kD

#### Specifications

Number of bands	9
Product Type	Protein ladder
Ready to Use	Yes
Size Range	10-250kD
Gel Compatibility	Tris-Glycine Gels, SDS PAGE Gels
Stain Type	6 blue, 2 orange and 1 green
Molecular Weight	250, 130, 100, 75, 55, 35, 25, 15, 10kD
Quantity	250µl
System Type	Western Blotting, SDS-PAGE

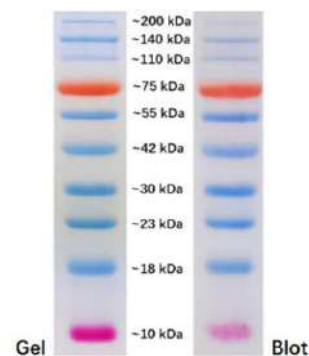


12% Tris Glycine SDS PAGE

### 2. Pre-Stained Protein Marker, 10-200kD

#### Specifications

Number of bands	10
Product Type	Protein marker
Ready to Use	Yes
Size Range	10-200 kDa
Gel Compatibility	Tris-Glycine, SDS PAGE Gels
Stain Type	8 blue, 1 orange and 1 pink
Molecular Weight	200, 140, 110, 75, 55, 42, 30, 23, 18, 10 kD
Quantity	250µl
System Type	Western Blotting, SDS-PAGE



12% Tris Glycine SDS PAGE

### ISO9001:2015



### ISO13485:2016



### Contact us

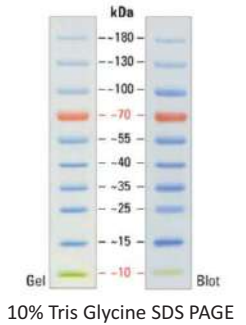
### Genei Laboratories Pvt Ltd.

- 📍 No.6, 6th Main  
BDA Industrial Suburb  
Near SRS Road, Peenya - 560058
- ☎ +91-080 2839 6894  
+91-080 2839 1453
- ✉ techsupport@geneilabs.com  
info@geneilabs.com  
sales@geneilabs.com  
www.geneilabs.com

### 3. Pre-Stained Protein Marker, 10-180kD

#### Specifications

Number of bands	10
Product Type	Protein marker
Ready to Use	Yes
Size Range	10-180kDa
Gel Compatibility	Tris-Glycine Gels, SDS PAGE Gels
Stain Type	8 blue, 1 orange and 1 green
Molecular Weight	180, 130, 100, 70, 55, 40, 35, 25, 15, 10 kDa
Quantity	250µl
System Type	Western Blotting, SDS-PAGE



10% Tris Glycine SDS PAGE

### 4. Pre-Stained Protein Marker, 55-320kD

#### Specifications

Number of bands	8
Product Type	Protein marker
Ready to Use	Yes
Size Range	55-250 kDa
Gel Compatibility	Tris-Glycine Gels, SDS PAGE Gels
Stain Type	7 blue, 1 pink
Molecular Weight	320, 270, 210, 165, 130, 90, 68, 55kD
Quantity	250µl
System Type	Western Blotting, SDS-PAGE



6% Tris Glycine SDS PAGE

### 5. Pre-Stained Protein Marker, 8-195kD

#### Specifications

Number of bands	10
Product Type	Protein marker
Ready to Use	Yes
Size Range	8-195kD
Gel Compatibility	Tris-Glycine, SDS PAGE Gels
Stain Type	8 blue, 2 pink
Molecular Weight	195, 140, 105, 70, 55, 40, 28, 20, 13, 8kDa
Quantity	250µl
System Type	Western Blotting, SDS-PAGE

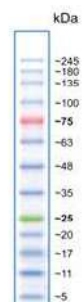


12% Tris Glycine SDS PAGE

### 6. Pre-Stained Protein Marker, 3.5 - 245kD

#### Specifications

Number of bands	13
Product Type	Protein ladder
Ready to Use	Yes
Size Range	3.5 - 245kD
Gel Compatibility	Tris-Glycine Gels, SDS PAGE Gels
Stain Type	11 blue, 1 red and 1 green
Molecular Weight	245, 180, 135, 100, 75, 63, 48, 35, 25, 20, 17, 11, 3.5kD
Quantity	250µl
System Type	Western Blotting, SDS-PAGE



4-20% Tris Glycine SDS PAGE

#### Ordering Information

Product	Cat #	PI No.
Pre-stained Protein Marker, 0.25ml; 10-180kD	3110482501730	PPMWA
Pre-stained Protein Marker, 0.25ml; 10-200kD	3110492501730	PPMWB
Pre-stained Protein Marker, 0.25ml; 10-250kD	3110502501730	PPMWC(15,100)
Pre-stained Protein Marker, 0.25ml; 55-320kD	3110512501730	PPMWD(9500)
Pre-stained Protein Marker, 0.25ml; 8-195kD	3110522501730	PPMWE
Pre-stained Protein Marker, 0.25ml; 3.5-245kD		PPMWF (11,100)